

**OUTLINE OF TORs &
INSTRUCTIONS FOR CONSULTING FIRMS**

For Submission of

EXPRESSION OF INTEREST

“Consultancy Services for Monitoring & Evaluation (M&E)”

Under Proposed Balochistan Integrated Water Resources
Management and Development Project

June 2022

GOVERNMENT OF BALOCHISTAN

PART-I

BALUCHISTAN INTEGRATED WATER RESOURCES MANAGEMENT AND DEVELOPMENT PROJECT

OUTLINE OF TERMS OF REFERENCE FOR MONITORING & EVALUATION (M&E) CONSULTANTS

1. INTRODUCTION

The Government of Balochistan has received a credit (No. 5885-PAK) from the World Bank for implementation of the Balochistan Integrated Water Resources Management & Development Project (BIWRMDP). The BIWRMDP Project is being implemented by the Government of Balochistan through the Balochistan Irrigation Department with support from other government departments having stakes in water resources of the province and various consultants. A full description of the project is available in the Project Appraisal Document at <http://documents.worldbank.org/curated/en/543681467305909456/pdf/PAD1661-PAD-P154255-OUO-9-IDA-R2016-0156-1-Box396265B.pdf>. The Project intends to hire Project Monitoring & Evaluation (M&E) Consultants for about 18 months, to provide services described in these outlines of Terms of Reference.

2. PROJECT DEVELOPMENT OBJECTIVE (PDO):

The development objective of the Project is to strengthen provincial government capacity for water resources monitoring and management and to improve community-based water management for targeted irrigation schemes in the Nari and Porali river basins of Balochistan. Progress towards the PDO will be measured using three indicators: (i) the percentage of available quality-assured hydro-met data from project basins publicly available in online data system, (ii) the irrigated area within project schemes with good water management practices, and (iii) the number of direct project beneficiaries (and the percentage of female beneficiaries).

3. Project Area:

The project area encompasses the Nari and Porali river basins of Balochistan (Figure 1). The Nari River Basin is the largest (69,224 km²) in Balochistan comprising of 20% of the area of the province. The Nari drains to terminal wetlands internal to the Indus River Basin. The Porali River rises in the hills of Wadh mountain range in the district of Khuzdar and runs through the plains of Lasbela District and into the Arabian Sea. The Porali River Basin is 11,616 km² in area.

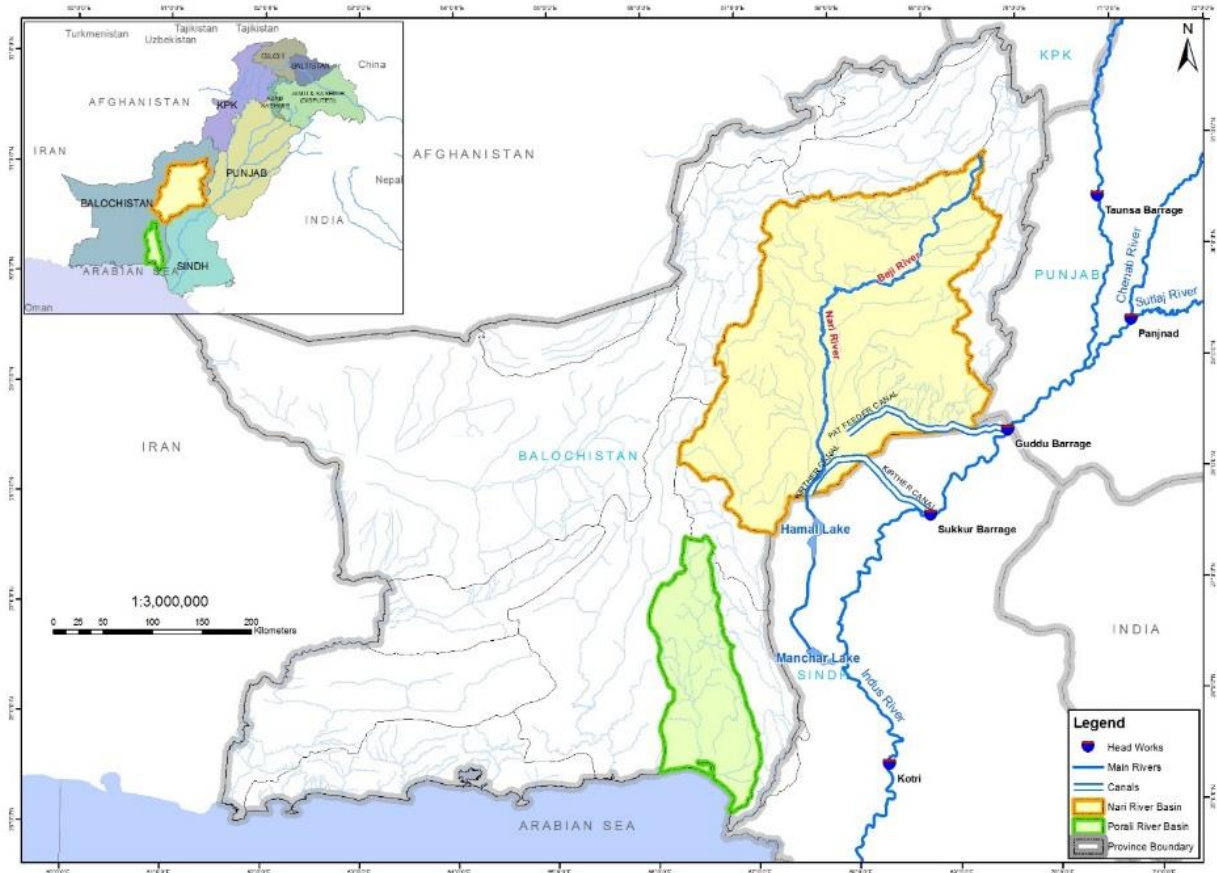


Figure 1: Map of Project Area

4. OVERVIEW OF PROJECT COMPONENTS:

The Project will begin transformation of water management in Balochistan from a narrow irrigation project focus, to an integrated multi-sectoral river basin planning and development approach. It will achieve this through institutional restructuring and strengthening, investments in hydro-meteorological data and water information systems, and priority infrastructure investments in irrigation, potable water supply, flood protection, watershed and rangeland management.

The Project will adopt an integrated water resources management approach promoting: (i) water saving technologies in irrigated agriculture (largest water user) such as utilization of high efficiency irrigation system, promotion of land leveling thereby improving soil and water availability; (ii) improved agriculture practices and promotion of drought tolerant cropping varieties and other productivity enhancement techniques related to pest management will improve soil and water conservation; (iii) better decision making by the farmers in better crop selection choices, based on analysis of soil, improved water availability, and weather advisories; (iv) improved watershed and rangeland management technologies to improve soil moisture retention, reducing erosion and improving groundwater recharge.

The Project has three components: (A) Institutions, Capacity and information, (B) Water Infrastructure and Management Investments and (C) Project Management and Technical Assistance. Brief descriptions are provided below; full descriptions are in the Project Appraisal Document.

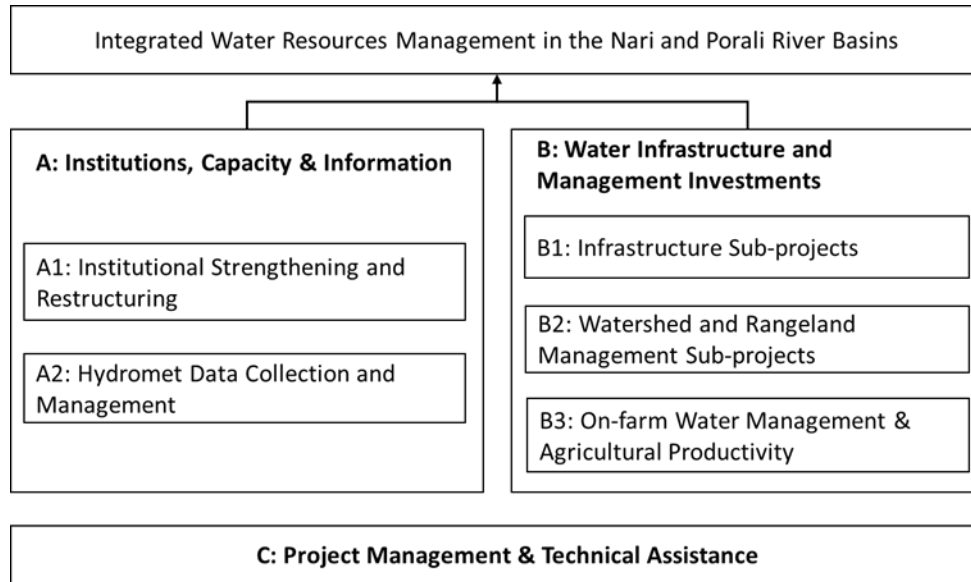


Figure 2: Structure and connections between Project components and sub-components.

a. COMPONENT A: WATER INFRASTRUCTURE AND MANAGEMENT INVESTMENTS

This component will lay the foundation for a gradual transition to IWRM in Balochistan. It supports institutional restructuring, professional development, installation and operation of hydro-meteorological systems, and establishment of river basin information systems and decision support systems. The project will establish a hydro-meteorological observation network in the two project river basins including telecommunication equipment, software for data transmission and analyses, storage conversion of the data into the needed information and training in network operation and maintenance. Appropriate institutional arrangements for IWRM will be determined and progressively implemented during the Project. Significant investment will be made in professional development to enable a transition to IWRM including new and more effective institutions capable of robust water resources planning and management.

b. COMPONENT B: WATER INFRASTRUCTURE & MANAGEMENT INVESTMENTS:

This component will support implementation of IWRM sectoral investments in the Nari and Porali basins within a framework of community mobilization and participation. Investments will include: construction and/or rehabilitation of irrigation and potable water supply facilities; flood protection infrastructure; watershed and rangeland management and environmental protection works; and on-farm water management and agricultural productivity activities.

c. COMPONENT C: PROJECT MANAGEMENT & TECHNICAL ASSISTANCE:

This component will support project management, monitoring and evaluation and studies. The component will finance expenditures associated with overall project implementation costs including incremental costs associated with the Project Management Unit (PMU) and the Project Implementation Units (PIUs), PSIA consultants, Monitoring and Evaluation (M&E) consultants, and implementation of Management Plans and Strategic Studies including Environmental Management Plan, Social Management Plan, and Gender Action Plan. Study tours will also be included with piloting of new technologies and others that may be identified during project implementation, as well as feasibility studies for other potential river basins.

5. PROJECT IMPLEMENTATION ARRANGEMENTS:

The Project is being implemented by the Government of Balochistan (GoB) over a period of six years starting from July 2016. The primary implementing agencies are the Provincial Planning & Development and the Irrigation Departments. The GoB intends to hire services of a consultancy firm having expertise in Monitoring and Evaluation (M&E), to assist the Project Management Unit (PMU) in monitoring and evaluating project operational efficiency and effectiveness. The project implementation arrangements are described in Project Appraisal Document (PAD).

The Balochistan Irrigation Department will be the lead Implementing Agency for the Project. The ID will access technical expertise from the departments of Agriculture, Forestry, Livestock, and Public Health Engineering to guide project implementation. A PMU will be established in Quetta to implement the project, incorporating functions from the Planning and Monitoring wing and Water Resource Management Directorate of the ID. The PMU will be led by a project director. It will include a financial management specialist, two accountants, a procurement specialist, a communication specialist, an environmental safeguards specialist, a social safeguards specialist, a gender development specialist, a monitoring and evaluation specialist, a matching grants specialist, a training management specialist, a water resources specialist, a livestock specialist and an agriculture specialist.

The Project Director will have overall responsibility for project implementation and execution, including financial management, procurement, and recruitment of staff, consultants and contractors. The Project Director and some other PMU staff will be permanent government staff assigned to the PMU for the duration of the Project. The various specialists will be individual consultants hired from the market. The PMU will also be supported by Project Supervision and Implementation Assistance (PSIA) and Monitoring and Evaluation Consultants.

To ensure effective and efficient implementation of the project at field level the PMU will be supported by two Project Implementation Units (PIUs) one each for the Nari and Porali river basins, to be located in Sibi and Uthal respectively. The PIUs, led by Deputy Project Directors with staff deployed from respective line departments, shall be responsible for execution of the project activities, collaboration with the communities, Community Organizations (Cos), Water Users Associations (WUAs) and Farmer Organizations (FOs) which shall be formed by the Community mobilization team of PSIA in the field.

6. Objectives of the Assignment:

The objective of this consultancy assignment will be” to carry out effective result based monitoring and evaluation of the project and indicate design adjustments and policy refinements based on the evaluated results”.

The specific objectives of the assignment shall include overview on results framework and develop a monitoring and evaluation system specific to the project after verifying the already established benchmark indicators through conduction of a Baseline study. (Refer to annex: 1 of the PAD).

7. Key Activities: The key tasks under this assignment include:

Task 1: Describe M&E Methodology and Prepare Inception Report

- Task 2: Update the existing Monitoring and Evaluation Framework
- Task 3: Develop Baselines for the PDO and Intermediate Results Indicators
- Task 4: Track PDO and Intermediate Results Indicators
- Task 5: Carry out Project Process Monitoring
- Task 6: Recommend Appropriate Corrective Actions
- Task 7: Monthly, Quarterly and Annual Monitoring and Progress Reports
- Task 8: Monitor and Evaluate the Voluntarily Land Donations (VLDs) Processes
- Task 9: Prepare a Project Completion Report
- Task 10: Strengthen the M&E Capacity of PMU and PIUs
- Task 11: Monitoring of Environmental and Social Safeguards Implementation
- Task 12: Data, Services & Facilities to be provided by the Client
- Task 13: Consultancy Staffing.

Part-II
(General Instructions)

1. The PMU BIWRMDP, GOVERNMENT OF BALOCHISTAN invites eligible consulting firms/ Joint Venture(s) with specific and proven competence and experience to indicate their interest in providing the services. Eligible firm(s) should submit Expression of Interest (**EOI**) in English language along with relevant complete details of the qualification and experience requested under Part-II.
2. Interested consulting firm(s)/ Joint Venture(s) must provide information indicating that they are qualified to perform above services (e.g. descriptions of similar assignments, value of previous assignments, experience under similar conditions, availability of appropriate professionals etc.).
3. In accordance with World Bank Guidelines, an association of consultants can take either be in the form of joint venture (JV) or a subcontract (sub-consultancy). Therefore, the consultant submitting their Expression of Interest in association should clearly mention whether their association is a Joint Venture or Sub-consultancy. Moreover under JV, each partner has to be reasonably qualified to take over the responsibilities and role of any of the partners in case one of them fails to perform or withdraws. Thus, the experience of all the firms in the JV will be considered for evaluation. In case of Sub-consultancy association, the Lead Firm must be clearly mentioned in the EOI.
4. A consulting firm(s)/ Joint Venture(s) will be selected in accordance with the procedures set out in the World Bank's World Bank's Guidelines: Selection and Employment of Consultants by World Bank Borrowers [January 2011 (Revised July 2104)] . The selection of the consultants will be selected in accordance with Selection Based on Consultants Qualification (CQS) method. www.worldbank.org/procure.
5. It is expected that the interested firm(s)/ joint venture(s) will have expertise in the development and implementation of M&E systems and procedures for: large and complex irrigation infrastructure systems; agricultural engineering, of-farm water management, high efficiency irrigation systems, watershed and rangeland management, hydro-metrological systems, matching grant, minor community based infrastructure; and capacity building and training of departmental staff.
6. The consultant should ensure that all submitted information is correct. An EOI containing significant omissions/errors may not be considered. An EOI with mis presentation of facts may be rejected at any stage till award of assignment
7. If the EOI consists of more than one volume, the applicant must clearly number the volumes constituting the EOI and provide an indexed table of contents for each volume. All documents should be securely bound.
8. Guidelines for Selection and Employment of Consultants by World Bank Borrowers can be perused at the website: www.worldbank.org/procure.

PART-III

(ESSENTIAL INFORMATION REQUIRED TO BE PROVIDED BY CONSULTING FIRM)

- i. Name, address, Phone, Fax and E-mail address along with postal and telegraphic address for the head office, branch offices and contact personnel.
- ii. Certificate of Registration of the firm as Legal Entity.
- iii. Firm(s)/ joint venture(s) name, address, copy of the Registration Certificate with relevant professional bodies of the concerned Government, supported by latest/ updated renewal, Country of Operations (if the firm is registered and operating in several countries). Memorandum/ Article of Association/ Partnership Deed or Joint Venture Agreement (if applicable) etc;
- iv. Names and short profiles of principals, proprietor, managing director, partners and directors, including their individual copy of the Registration Certificate with relevant professional bodies along with updated renewal.
- v. Details of the technical personnel available with the firm either as permanent staff or retainer consultants with their indicative qualifications and expertise, briefly. **Staff CVs are not required at this stage**
- vi. Sound financial position with documentary evidence in the form of last three years audited financial accounts' statement of the firm/joint venture members.
- vii. National Tax Number of the firm/joint venture/consortium members.
- viii. Data Sheets of relevant (similar and specific experiences) assignments/works, duly substantiated, by the firm(s)/ Joint Venture(s) members either completed or in progress, with the following details for last Ten (10) years. The Consultants should have successfully completed at least two assignments of similar scale and complexity.
 - a. Name of the Project
 - b. Cost of the Project
 - c. Name and address of the Client
 - d. If case of association of Consultant(s), the type of association i.e. either JV or sub-consultants be mentioned clearly along with names and address of all the partners.
 - e. Consultancy services rendered along with the Start & Completion Date.
 - f. A firm, which was a partner in a previous joint venture(s), should furnish a statement providing details of work, component of works performed individually and its over-all share (percentage) in the works performed by the joint venture.
- ix. Any additional documents to support relevant experience of firm(s)/ Joint Venture(s);
- x. List and status of litigation/arbitration by the firm or any member of the joint venture(s) against a client, if any.

- xi. A Certificate/Affidavit from all the participating partners of the association confirming that: (a) applicant firm(s)/ joint venture(s) have never been **blacklisted** by any International, Government/ Semi Government Organization and (b) All the information provided by the applicant firm(s)/ joint venture(s) is correct.

Any further information/clarification may be sought.

PROJECT DIRECTOR
Project Management Unit
BIWRMD Project
18-B Jinnah Town, Samungli Road Quetta,
Phone: +92-812-870705 Fax: +92-812-870704,
biwrmdp@gmail.com